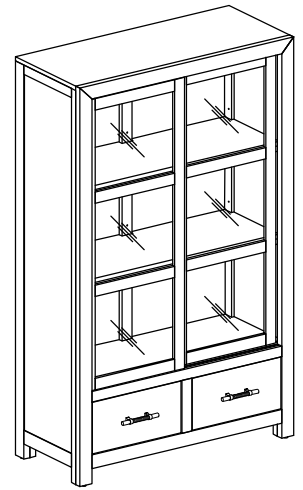




**Warning :**

- Be sure to check all packing material carefully for small parts, which may have come loose inside the carton during shipment.
- To prevent possible scratches and damage, this furniture must be assembled on a soft surface such as a blanket or carpet.

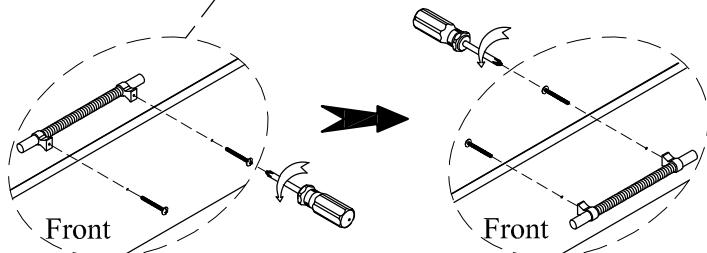
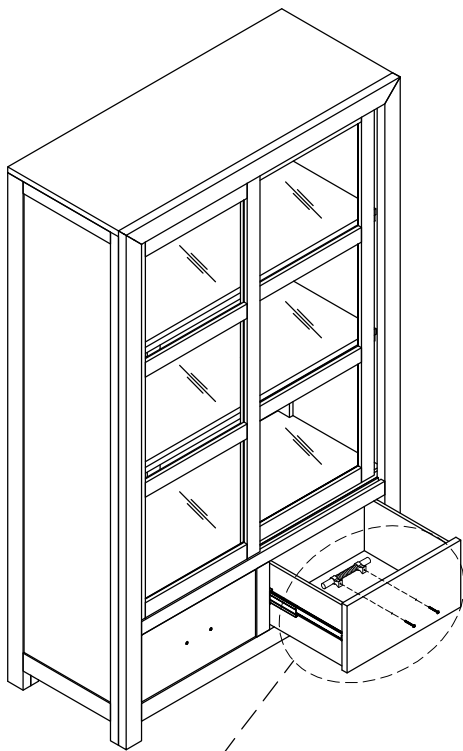


30754  
Display Cabinet

**Components and Hardware List**

<p>Furniture Tipping Restraint Kit</p>  <p>1 pc.</p>	<p>Tool Required (not provided)</p> <p>Phillips Screwdriver</p> 
--	---

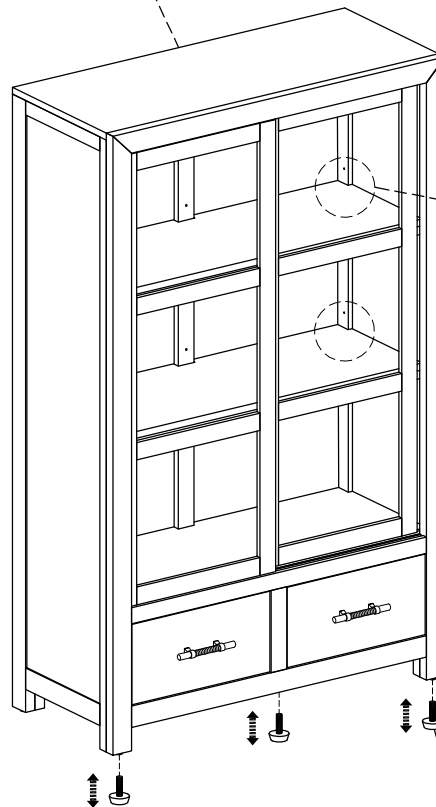
**STEP 1:**



Remove Handle from inside drawer

Reattach Handle to front of drawer

**STEP 2:**



Unscrew to adjust the shelf height

Adjustable Leveler 3 pcs

For product and personal safety, a Furniture Tipping Restraint kit has been included with this unit which can help to minimize the risk of the unit accidentally tipping forward, if used and properly installed per the manufacturer's instructions.